



Latitude Shelving

Specification Guide

The Latitude shelving system is a firm favourite with librarians and designers. Complete with the ability to customise components and accessories to fit your precise needs, this system is cost effective and will bring a touch of finesse to both traditional and contemporary interiors.

This stylish and versatile but affordable shelving system can be designed with maximum flexibility; using a wide range of finishes, end panels and sizes we can help you create a system that perfectly fits your space and requirements.



Sizes available

What's the difference?

Our reference size is the industry standard sizing for shelving, and makes ordering from us a lot simpler. Please use the reference size when placing your order.

The actual size is primarily for use by architects and designers who need exact measurements for drawings and site layouts.

Wall Freestanding

	Reference Size (mm)	Actual Size (mm)	
		Starter Bays	Add-On Bays
Height	2100	2120	2120
	1800	1820	1820
	1500	1520	1520
	1200	1220	1220
Width	1000	1062	1032
	900	962	932
	750	812	782
Depth	250	278	278
	300	328	328

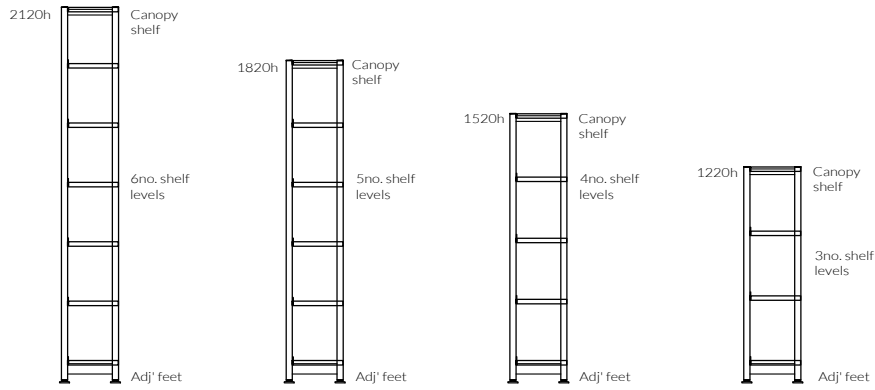
Double Sided Island

	Reference Size (mm)	Actual Size (mm)	
		Starter Bays	Add-On Bays
Height	2100	2120	2120
	1800	1820	1820
	1500	1520	1520
	1200	1220	1220
			With Castors
	1500	1550	1550
	1200	1250	1250
Width	1000	1062	1032
	900	962	932
	750	812	782
Depth	250	526	526
	300	626	626

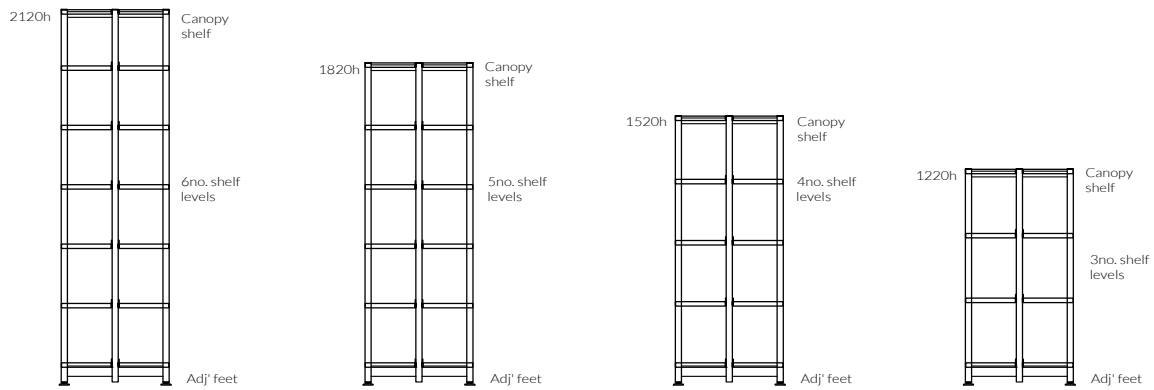
Elevations

Heights (mm)

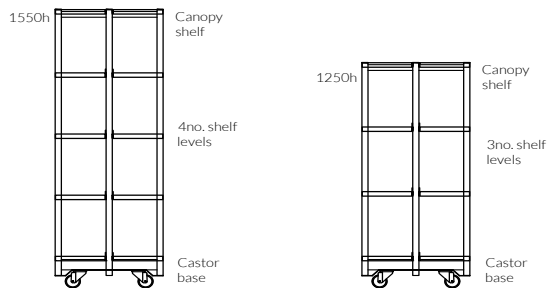
Wall Freestanding



Double Sided Island



Double Sided Island with Castors



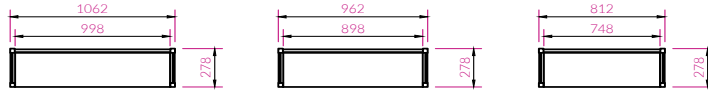
Please note:

- All shelves are shown 250mm deep. 300mm shelves are available.
- Levelling feet adjustment can add up to 15mm to the actual height of all Freestanding and Island units.

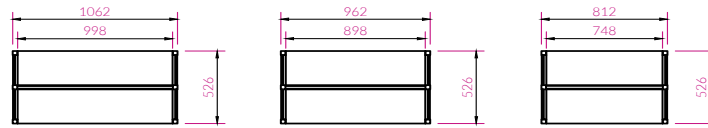
Plan View

Starter Bays Widths and Depths (mm)

Wall Freestanding

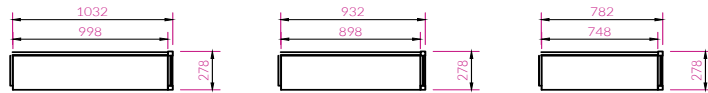


Double Sided Island

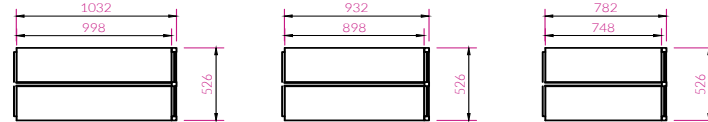


Add-On Bays Widths and Depths (mm)

Wall Freestanding



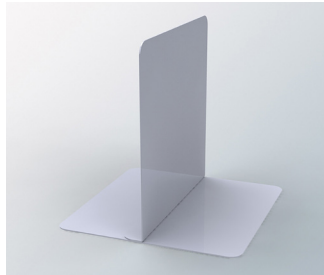
Double Sided Island



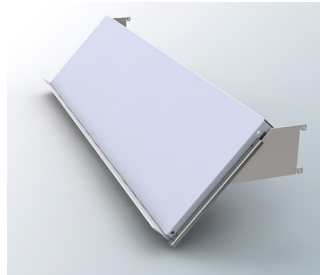
Accessories



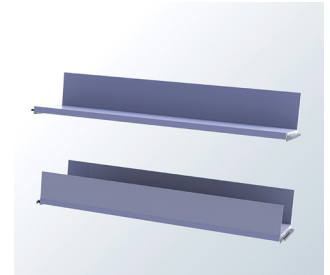
Suspended Book Support



Magnetic Book Support



Conversion Bracket



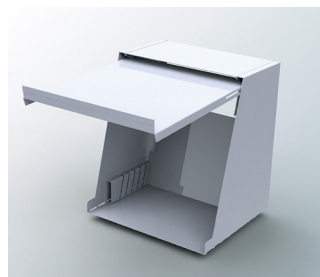
Multimedia shelf



Bay Headers



Castor Frame



Display/Storage Box



End Table

End panel options



Plain MFC



Laminated



Wow Display Panel



Acrylic



Steel Perforated

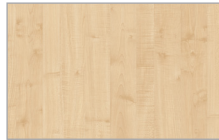


Steel Fully Perforated

Band A Colours More MFC colour options are available upon request



White*
Egger W1000



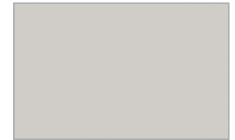
Maple*
Krono 0375



Lugano Oak*
Krono 0687



Beech*
Krono 0381



Light Grey*
Egger U708



Dust Grey
Egger U732



Anthracite*
Krono 0164



Orange
Pfleiderer U16010



Carmine Red
Pfleiderer U17005



Zinc Yellow
Pfleiderer U15194



Olive
Pfleiderer U19509



Emerald
Krono U155

Band B Colours More MFC colour options are available upon request



Khaki
Pfleiderer U19512



Ice Blue
Pfleiderer U18148



Cirrus
Pfleiderer U18010



Java
Pfleiderer U18008



Ocean
Pfleiderer U18576



Granny Smith
Pfleiderer U19501



Cranberry
Pfleiderer U17019



Purple Jam
Unilin U140



Mimosa
Pfleiderer U17013



Ponderosa Pine
Pfleiderer R55004

Band C Colours More MFC colour options are available upon request



Shorewood
Egger H3090



Walnut
Egger H3734



Halifax Oak*
Egger H1180

Important Notes:

- The printing process or computer screen cannot reproduce exactly the subtle colours, textures and finishes of the decor range.
- Please review a sample prior to ordering.
- Some colours can be discontinued at short notice so please contact the office for availability.

Head Office

Concept House,
Upton Valley Way East,
Pineham Business Park,
Northampton,
NN4 9EF

www.fglibrary.co.uk
enquiries@fglibrary.co.uk
01604 755954

London Showroom

84 Clerkenwell Road,
London,
EC1M 5RF

