



Writtle University College

Chelmsford, Essex

Case Study



Brief

In early 2018, FG Library & Learning were commissioned by Writtle University College to install soft furnishings and furniture to the newly refurbished Maddison building.

Previously utilised as an accommodation and office block, the internal spaces were opened out to create four sociable study rooms available to students both day and night.

From the outset, there were three key requirements of the project: quality, connectivity and accessibility. The area was to be a distinctly social space, with no fixed PCs but with students' own device use to the fore.

Besides offering a range of comfortable, relaxed study spaces for both individual and collaborative working, the design needed to mirror the facilities on both floors (there is no lift) thus allowing wheelchair users full access to the variety of study options.

The client was looking for a clean, contemporary look, with colours specifically chosen to suggest an air of purposeful studiousness, maintaining a calming atmosphere whilst at the same time promoting concentration.

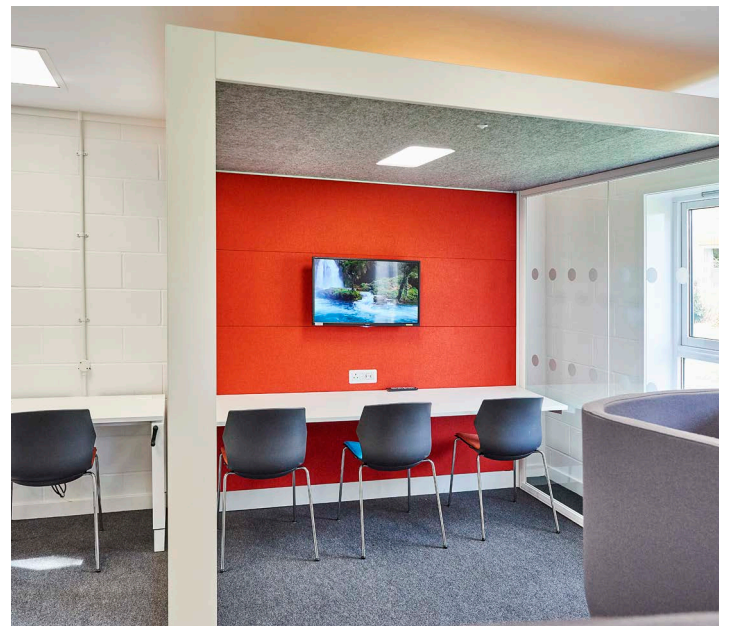
Solution

FG Library & Learning provided a variety of products ranging from individual upholstered stools to low and high-back sofas, high-back chairs, flexible device tables, Oasis Linear Team Booths with desking and integrated power and data sockets, height-adjustable desks especially designed for wheelchair users or those with mobility issues, a teardrop media table and divided study carrels both with integrated power sockets.

This combination of products gave a relaxed feel to the space, and the project was finished off with graphic wall signage and window manifestations designed in-house. The out-of-hours usage meant that the upholstery would be under prolonged and intense use, so seating was finished in attractive-yet-practical Halcyon fabric to ensure it looks good for years to come.

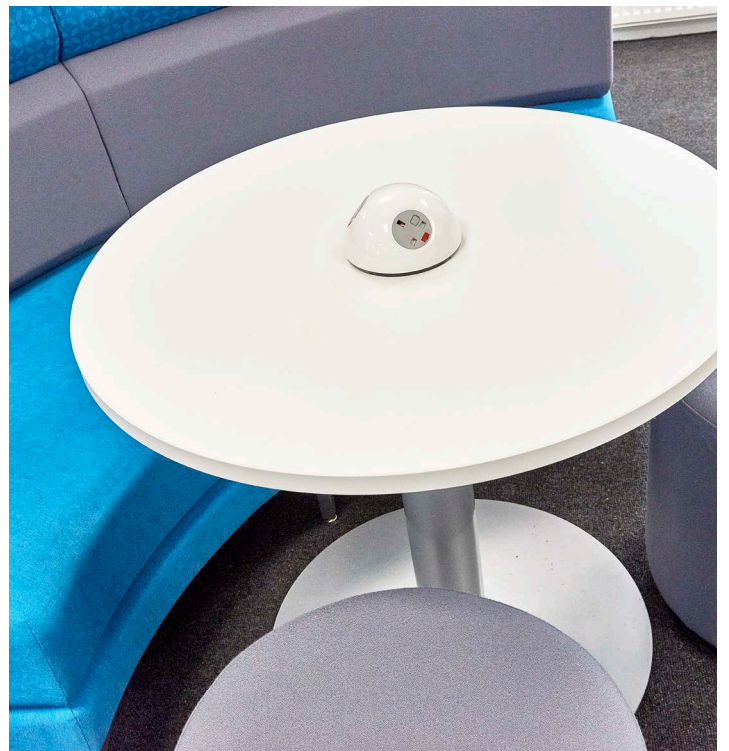
Throughout the scheme, Acoustic Wall Art and Acoustic Pebbles were used to help manage noise within the space, whilst Acoustic pods and booths allow students to collaborate without disturbing other users.

The result is a group of four spaces that work together perfectly to give students a whole host of relaxed study space, whether for quiet, individual, social or collaborative use, both during the day and into the evenings.











The logo for FG Library & Learning features the letters 'f' and 'g' in a large, bold, lowercase font. The 'f' is solid black, while the 'g' is white with a black outline. To the right of 'fg' are the words 'library' and '& learning' in a smaller, lowercase, sans-serif font. The entire logo is enclosed within a white, thick, curved line that forms an oval shape.

fg library
& learning

Complete, inspired design solutions

HEAD OFFICE

FG Library & Learning
Concept House
Upton Valley Way East
Pineham Business Park
Northampton
NN4 9EF

LONDON SHOWROOM

20 - 24 Kirby Street
Farringdon
London
EC1N 8TS